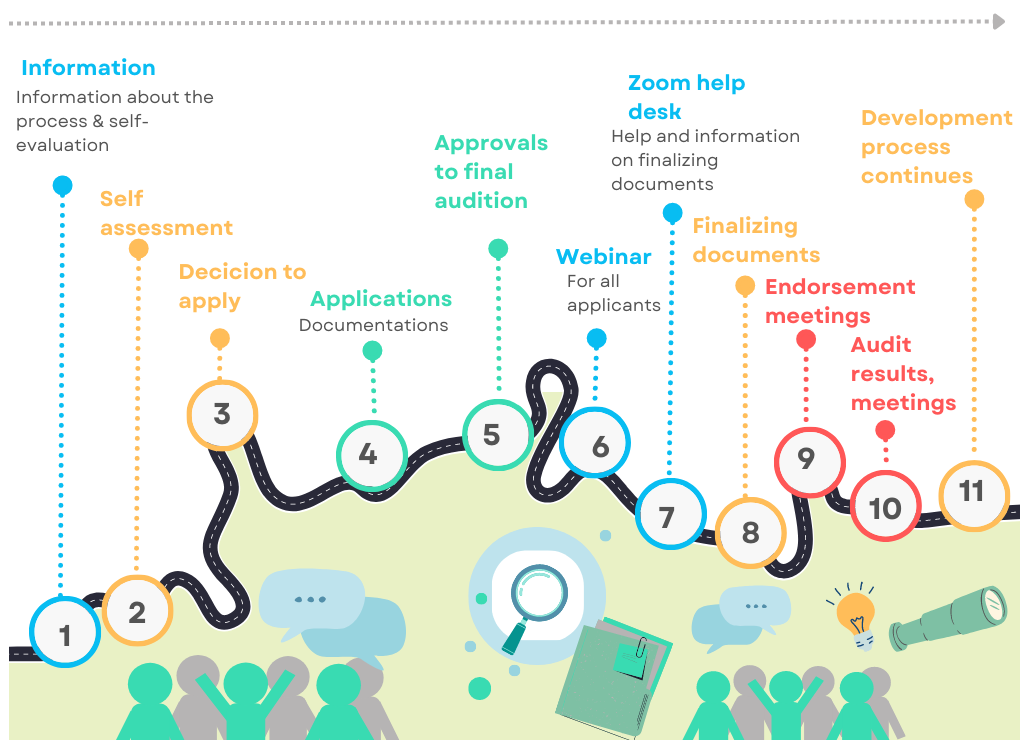


APPLICANT GUIDANCE FOR THE ICCE ENDORSEMENT PROCESS FOR HEI SPORT COACHING DEGREES

ICCE is looking for expressions of interest to apply for the ICCE endorsement process. Please read this applicant guidance and sign up on this link if your organization is interested. ICCE will review all expressions of interest and select 4 for the next year of the programme by May 2025.

The endorsement process will have following parts:



1. Process Information
2. Self-assessment (webropol questionnaire link)
3. Decision to apply
4. Filling out the Application documents by April 15st, 2025. (webropol link)
5. May 2025: Assessment of the applications and approvals by ICCE
6. Online webinar for all the applicants
7. Opening for the final documents and Zoom help desk for applicants (chosen)
8. Finalizing the documents by August 31st, 2025.
9. September & October: Endorsement meetings in Zoom/ One 3–4-hour meeting for each organization
10. November & December: Results and feedback meetings at Zoom

Self-assessment and application

The purpose of Self-assessment [ICCE Standards for Higher Education Sport Coaching Bachelor Degrees Pre-Submission Self-Assessment: eTest powered by Webropol](#) is to help the organization identify the strengths and development areas of its own education in relation to the ICCE Standards for Higher Education in Sports Coaching Bachelor degrees. The first step in the application process is to conclude the self-assessment.

After the self-assessment, it is time to decide whether to apply for the process. For this purpose, a Webropol survey has been created, in which you are asked to return the following documents and information:

- Sport coaching curriculum
- The composition of the workgroup

- Description of your program: How long it has been delivered, number of staff members, amount of students
- Your expectations for the endorsement process
- Anything special in your program you would like to emphasize

How to succeed in the process?

The auditing process is about the organization's development and its goal is not only to achieve an endorsement label for the education program. To get the most out of the process, it is strongly recommended that a working group be assembled for this purpose. It is also hoped that different parties (e.g. students) will be involved in various stages of the process.

The entire process takes time, so please make sure that the staff has time to do the self-assessments and documentation carefully. We recommend that time resources are reserved for a group of people.

Why apply?

Experience from the first endorsement pilot: "This process encouraged us to assess do we meet the requirements international coaching degree standards. We were able to map out if our general qualification criteria meet the new ICCE coaching bachelor's degree standards. This has helped us to clarify our vision how to increase the impact of our education on our students. To further reflect the education's impact, we decided that it was important to get deeper feedback about its effectiveness from the students. We recruited yearly one of our final year students as an intern during their work placement year to help us to develop the influence of the programme. Another significant factor was the possibility to expand our networks. It has allowed us to develop our own competence and thinking in many ways, for example by writing book chapters together, receiving visiting coaches and coach developers and international working groups and helped us gain access to the thinking of many experts in the field. This journey that started from the endorsement process has led us currently to explore how to include the meta-skills into our curriculum processes. " (Haaga-Helia University of Applied sciences)

Endorsement Cost and Contact info:

The endorsement assessment cost is **€4500**. This includes a four-year membership of the ICCE. Fee is non-refundable and half of the sum will be paid by application and half at the end of the process.

More information Karen Livingstone, ICCE, k.livingstone@icce.ws