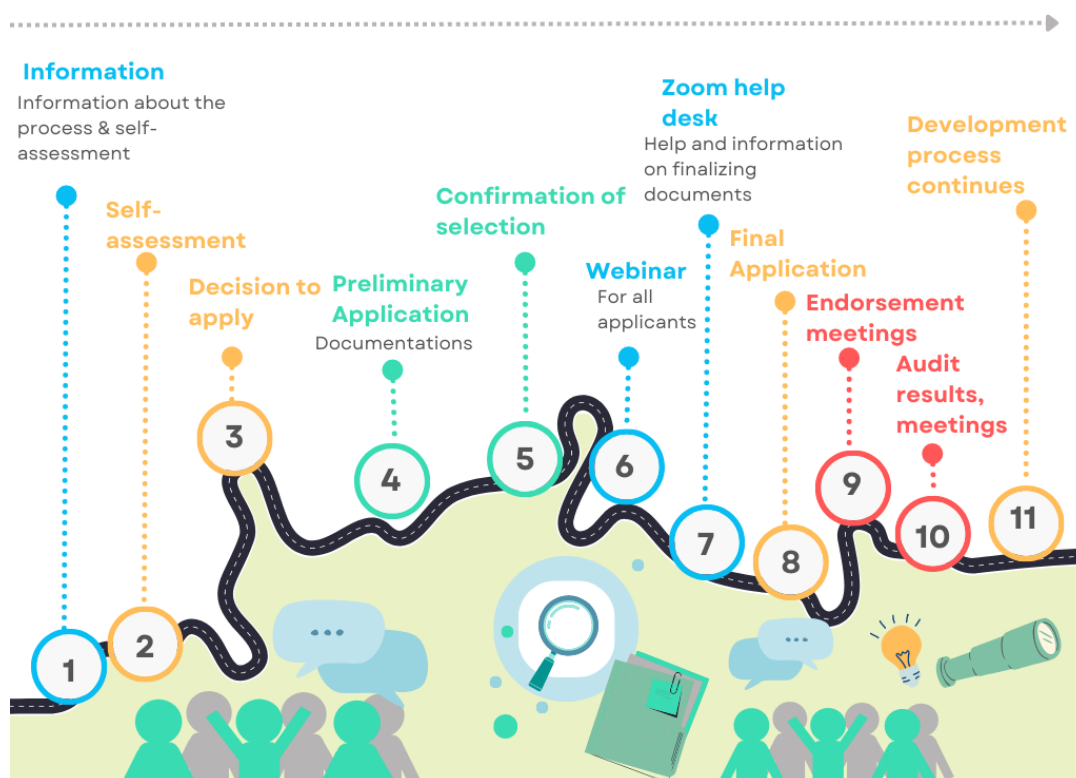


APPLICANT GUIDANCE FOR THE ICCE ENDORSEMENT PROCESS FOR SPORT COACHING DEGREES

ICCE is looking for expressions of interest from a maximum of 6 higher education institutions to form the first full cohort of ICCE Coaching Degree Endorsements. Please read this applicant guidance and sign up on the link below if your organization is interested in applying. ICCE will review all expressions of interest and select 6 institutions for the first year of the programme by January 2024.

The endorsement process will have the following steps:



1. Review Process Information
2. Complete Self-assessment Questionnaire
(<https://link.webropolsurveys.com/S/7AAC6A394408011B>)
3. Decision to apply
4. Filling out the Preliminary application documents by December 15th, 2023.
(<https://link.webropolsurveys.com/S/03E8753549593513>)
5. Assessment of the applications and selection of cohort of 6 by ICCE
6. Opening for the final documents and Zoom help desk for selected applicants
7. Finalizing the documents by the end of January, 2024.
8. February-April 2024: Endorsement meetings in Zoom/ One 3–4-hour meeting for each organization
9. May, June 2024: Results and feedback meetings at Zoom

Self-assessment and application

The purpose of the self-assessment questionnaire

<https://link.webpolsurveys.com/S/7AAC6A394408011B> is to help your organization identify the strengths and development areas of your degree in relation to the ICCE Standards for Higher Education in Sports Coaching Bachelor degrees.

After the self-assessment, it is time to decide whether to apply for the process. For this purpose, a Webropol survey has been created, in which you are asked to return the following documents and information:

- Description of your program: History, Reason for existence, how long it has been delivered, number of staff members, amount of students
- Sport coaching curriculum
- The composition of the workgroup (team that is involved in this endorsement process)
- Your expectations for the endorsement process
- Anything special/unique about your program you would like to emphasize/highlight?

Link to Pre-application: <https://link.webpolsurveys.com/S/03E8753549593513>

How to succeed in the process?

The process is intended not only as a way to achieve endorsement, but to support the further development of the organization and the degree. Therefore, to get the most out of the process, it is strongly recommended that a working group be assembled for this purpose. It is also hoped that different parties (e.g. students) would be involved in various stages of the process.

The entire process takes substantial time, so please make sure that the staff has time to complete the self-assessments and documentation carefully. We recommend that staff time is allocated accordingly.

Why apply?

The process can be highly developmental. This is what Haaga-Helia University of Applied Sciences had to say after taking part in the pilot endorsement scheme:

“This process encouraged us to assess if we met the requirements of the International Coaching Degree Standards. We were able to map out our degree and compare it to the international best practice. This helped us to clarify our vision about how to increase the impact of our education on our students. We decided that it was important to get deeper feedback about its effectiveness from the students themselves. We recruited one of our final year students as an intern during their work placement to help us to develop our understanding of the influence of the programme. Another significant success factor was the possibility to expand our networks and discuss our degree with other universities. It has allowed us to develop our own competence and collaborate in many different ways, for example by writing book chapters together, receiving visiting coaches and coach developers and international working groups. It also helped us gain access to the thinking of many experts in the field. The journey that started with the endorsement process has led us currently to explore how to include the student meta-skills into our curriculum processes”.

Endorsement Cost and Contact info:

The endorsement assessment cost is €4500. This includes a four-year membership of the ICCE.

Fee is non-refundable and will be paid by December 2023.

More information Karen Livingstone, ICCE, k.livingstone@icce.ws